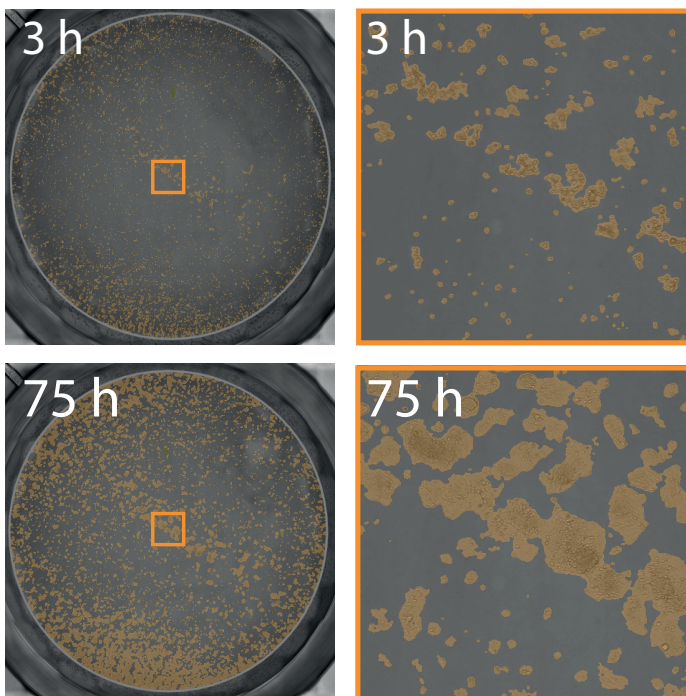
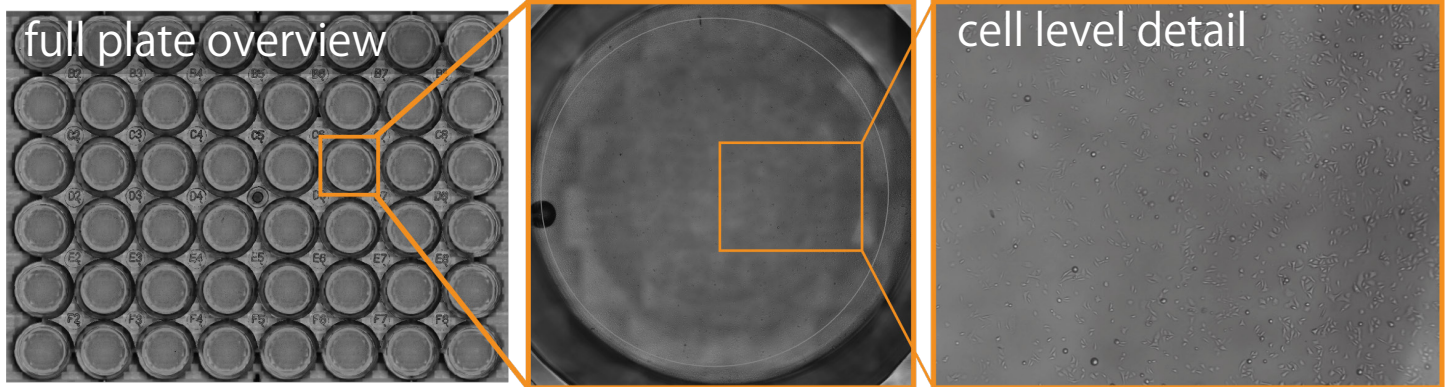
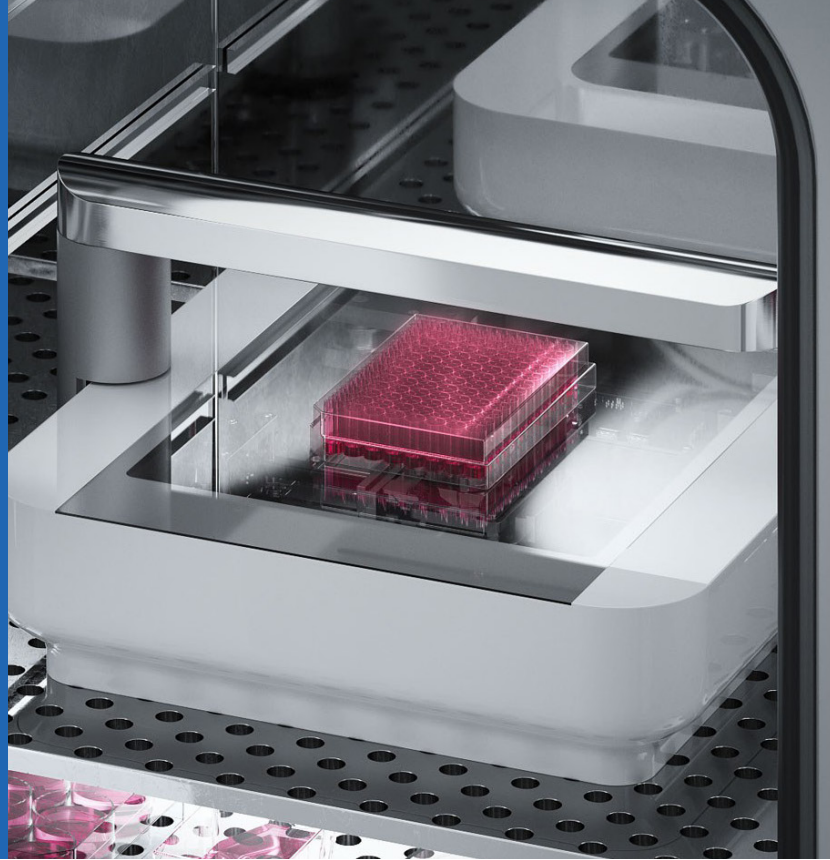


# CytoSMART Omni

## live-cell imaging

Time-lapse brightfield imaging to study cell health, viability, colony formation and migration

Users can perform kinetic assays that capture cellular behavior for days or even weeks at a time.



**Automated colony detection:** HEP-G2 cells with colony mask overlay. The image detection algorithm filters colonies based on user specifications on size, circularity and perimeter and follows their growth over time. Cells were recorded for 75 hours with a 3 hour time interval.

### Colony Formation

Colony formation assays provide insight into the clonogenicity of cells. The formation and growth of colonies can be monitored using the CytoSMART Omni. Bright-field images are automatically generated from within cell culture incubators over periods of days. Whole-well surfaces are captured to get a full sample overview.

Integrated image analysis algorithms in the CytoSMART Cloud provide information on the number of colonies, colony circularity and size. The highlighted orange areas in the image indicate the colonies that are used for the analysis. Both the numerical data and images can easily be extracted after analysis.\*

<https://www.cytosmart.com/products/omni>

\*Research use only. Not intended for diagnostic purposes

